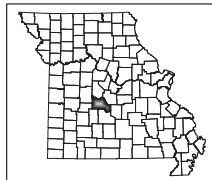
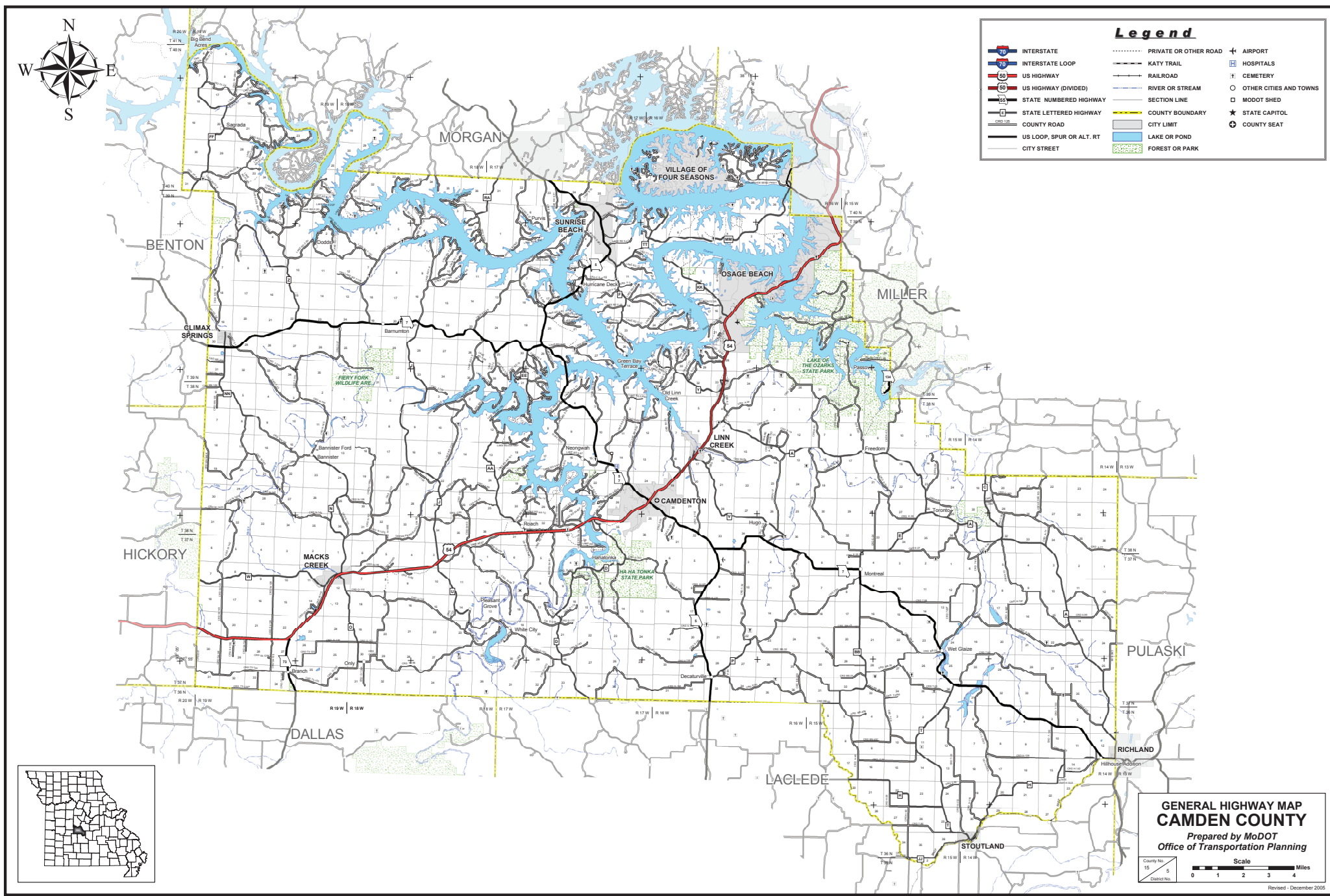




Legend

- | | | | | | |
|--|---------------------------|--|-----------------------|--|------------------------|
| | INTERSTATE | | PRIVATE OR OTHER ROAD | | AIRPORT |
| | INTERSTATE LOOP | | KATY TRAIL | | HOSPITALS |
| | US HIGHWAY | | RAILROAD | | CEMETERY |
| | US HIGHWAY (DIVIDED) | | RIVER OR STREAM | | OTHER CITIES AND TOWNS |
| | STATE NUMBERED HIGHWAY | | SECTION LINE | | MODOT SHED |
| | STATE LETTERED HIGHWAY | | COUNTY BOUNDARY | | STATE CAPITOL |
| | COUNTY ROAD | | CITY LIMIT | | COUNTY SEAT |
| | US LOOP, SPUR OR ALT. RT. | | LAKE OR POND | | |
| | CITY STREET | | FOREST OR PARK | | |



**GENERAL HIGHWAY MAP
CAMDEN COUNTY**
Prepared by MoDOT
Office of Transportation Planning

County No. 15
District No. 5

Scale
0 1 2 3 4 Miles

Revised - December 2005